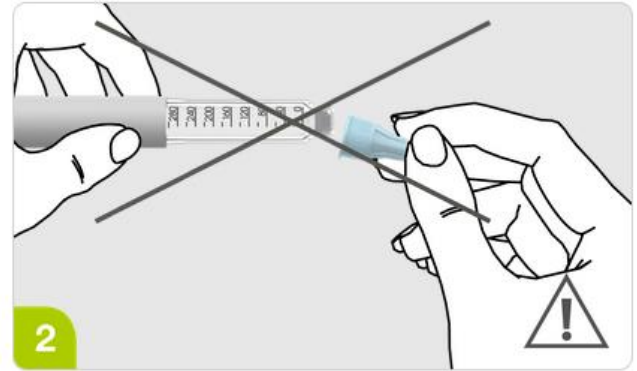
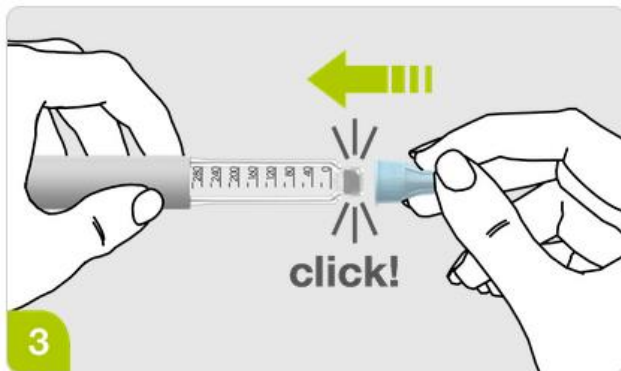


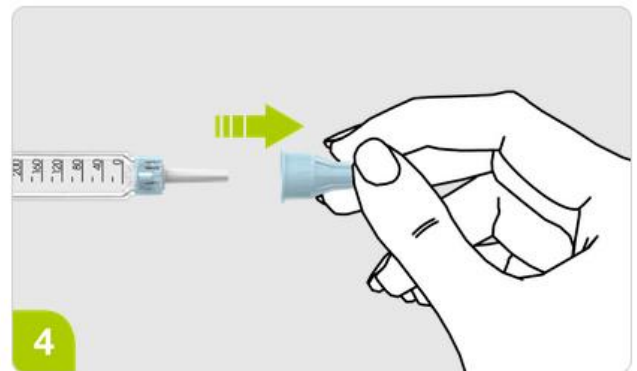
1 Quitar el precinto.



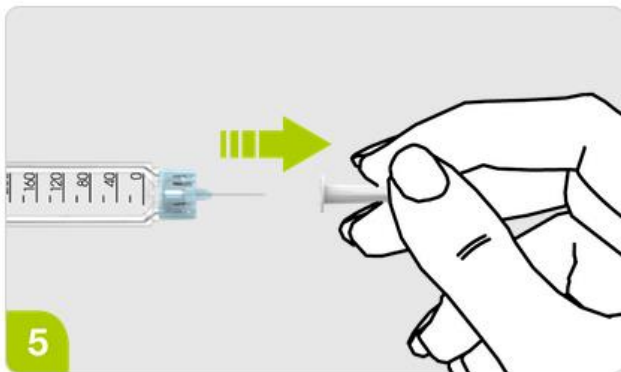
2 No enroscar en la pluma.



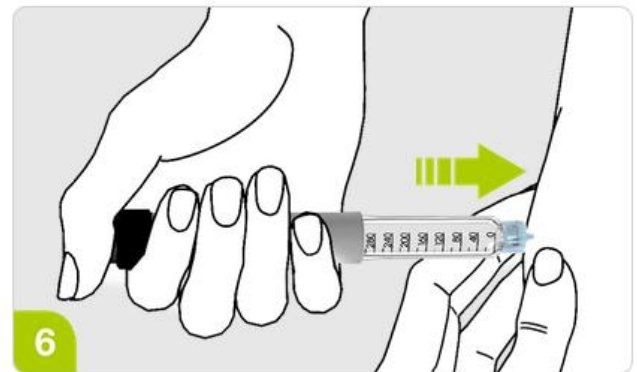
3 Presionar en la pluma hasta oír click.



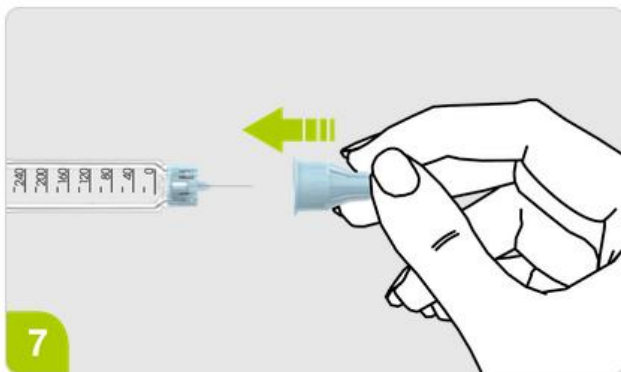
4 Quitar el protector de plástico.



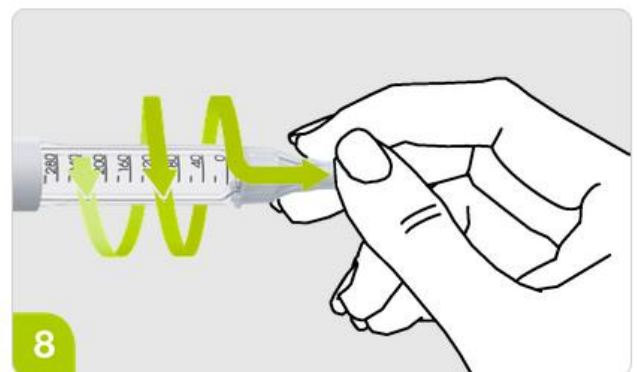
5 Quitar el protector de la aguja.



6 Inyectar la insulina como siempre.



7 Poner los protectores de plástico



8 Desenroscar y desechar la aguja.

**SOLO UTILIZAR UNA VEZ CADA AGUJA**